

UG515DL-1

Family	Professional dishwasher
Subfamily	High-reduced glasswasher
Basket dimensions	500x500 mm
Panel	Easyline
5 stages filter system	Yes
Rinse pump H.T.R. system	Yes
Dual heating	Yes
Usable load height	307 mm
Power connection	400 V 3N~ / 12 A / 7,3 kW / 50 Hz
Depth with open door	925 mm
Maximum dishes diameter	300 mm
Product dimensions WxDxH	600x600x720 mm



Target

Solutions	Coffee shops/Wine bars
-----------	------------------------

Aesthetics

Series	Easyline	Led color	Green
Control panel	electronic		

Functions



Functionality	5-stage filter; HTR; Door clearance 307mm
---------------	---

Programs

Programs	6 automatic programs	1 fully programmable program	Self-cleaning programs
Program options	Extra rinse	Clean water cycle	

Program specifications

Boiler 71°C/Tank 60°C - 1'20"	Boiler 85°C/Tank 60°C - 1'10"	Boiler 85°C/Tank 60°C - 2'
Boiler 85°C/Tank 60°C - 3'	Boiler 71°C/Tank 60°C - 2'10"	Boiler 85°C/Tank 60°C - 4'10"
Drain and self cleaning cycle	Yes	
Maximum basket/hour	40	
Maximum dishes/hour	1080	

Interface

Display	8 digit	Detergent missing alert	Yes
Number of buttons	5	Cycle progress alert	Yes
On/Off button	Yes	End-cycle alert	Yes
Rinse aid missing alert	Yes	Manual diagnostic	Yes

Construction

Tank	AISI 304 stainless steel deep drawn	Door gasket	On 3 sides
Tank construction	Double wall	Rack guides	Embossed
Tank material	Stainless steel AISI 304	Tank capacity	11 l
Back panel	Galvanized	Boiler capacity	6 l
Door	Double wall	Noise	Lpa 56,5 dBA
Balanced door	Yes	Protection class	IPX4
Tank filter	Stainless steel	Net weight	59,000 kg
Washing spray arm	2 in stainless steel	Adjustable feet (min-max h)	0-15 mm
Rinse spray arm	2 in stainless steel	Drain max. height	600 mm

Technical Features

Tank heating element	2000 W	Warm water connection	Cold 15°C
Boiler heating element	6000 W	Max temperature inlet water	60°C
Washing pump	700 W	Max water hardness	12°FH - 7°dH
Default connection	6700 W	Inlet pressure	100-600 kPa
Water cycle consumption	2,3 l		

Electrical Connection

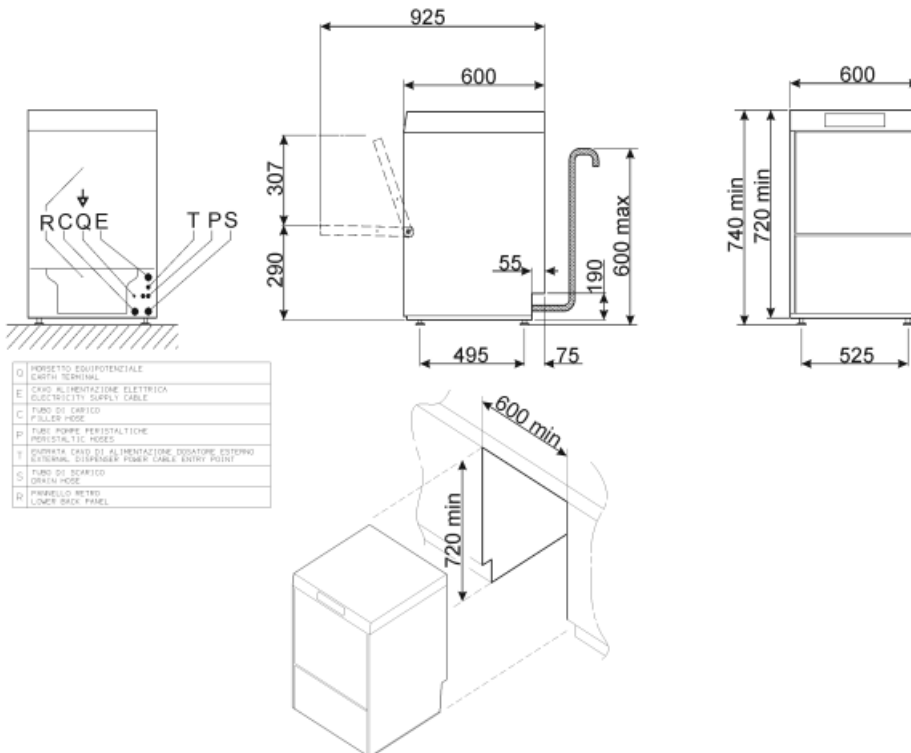
Plug	Not present	Optional electrical connection	230 V 3~ / 21 A / 7,3 kW / 50 Hz; 230 V~ / 15 A / 3,4 kW / 50 Hz (NC); 230 V~ / 20 A / 4,5 kW / 50 Hz (NC); 230 V~ / 22 A / 5,0 kW / 50 Hz
------	-------------	--------------------------------	--

Equipments

Peristaltic detergent doser	Electronic control	Rinse load	0,4 l/h
Peristaltic rinse-aid doser	Electronic control	Conductivity sensor	Si
Thermostop system	Yes	Partial renewal of water in the tank and built-in drain pump	Yes
Soft Start system	Yes	Water supply pipe diameter	DN15 - ½"
Stand-by system	Yes	Drain supply pipe diameter	DN20-G 3/4"
Automatic start	Yes, default OFF	Detergent (red) hose lenght	2,2m
Detergent load	1,5 l/h	Rinse aid (blue) hose lenght	2,2m

Accessories Included

Flat basket	1x WB50G02	Drain hose	Yes - 2m
Water supply hose	Yes - 1,5m		



Not included accessories

WB50PG5

Wire basket for no. 25 plastic glasses with flat bottom, 500x500x260 mm

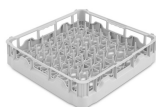
WH00S01

Wire insert for 12 small dishes



PB50D01

Polypropylene basket for 18 plates, 500x500x105 mm



WS5

Underframe for glasswashers 500mm



KITSONLIV

Probe level kit for double wall models



PHOOS01

Polypropylene single basket for cutlery



PHOOS02

6 compartments polypropylene basket for cutlery



Symbols glossary (TT)



HTR RINSING SYSTEM



MAX.USABLE HEIGHT 307mm



5 STAGE FILTER